

kirra



kirra

While spacious, the Kirra features the easy livability of a much larger home. Cool, open expanses invite the occupants to soak up the atmosphere and unwind from schedules that are a world away from this oasis.

With internal entry to the double garage the Kirra offers uncluttered access and a functional open plan. Four good sized bedrooms, the main with ensuite, as well as an inviting back porch area and sensational street appeal mean the Kirra has been created from the ground up to be an eminently livable layout.

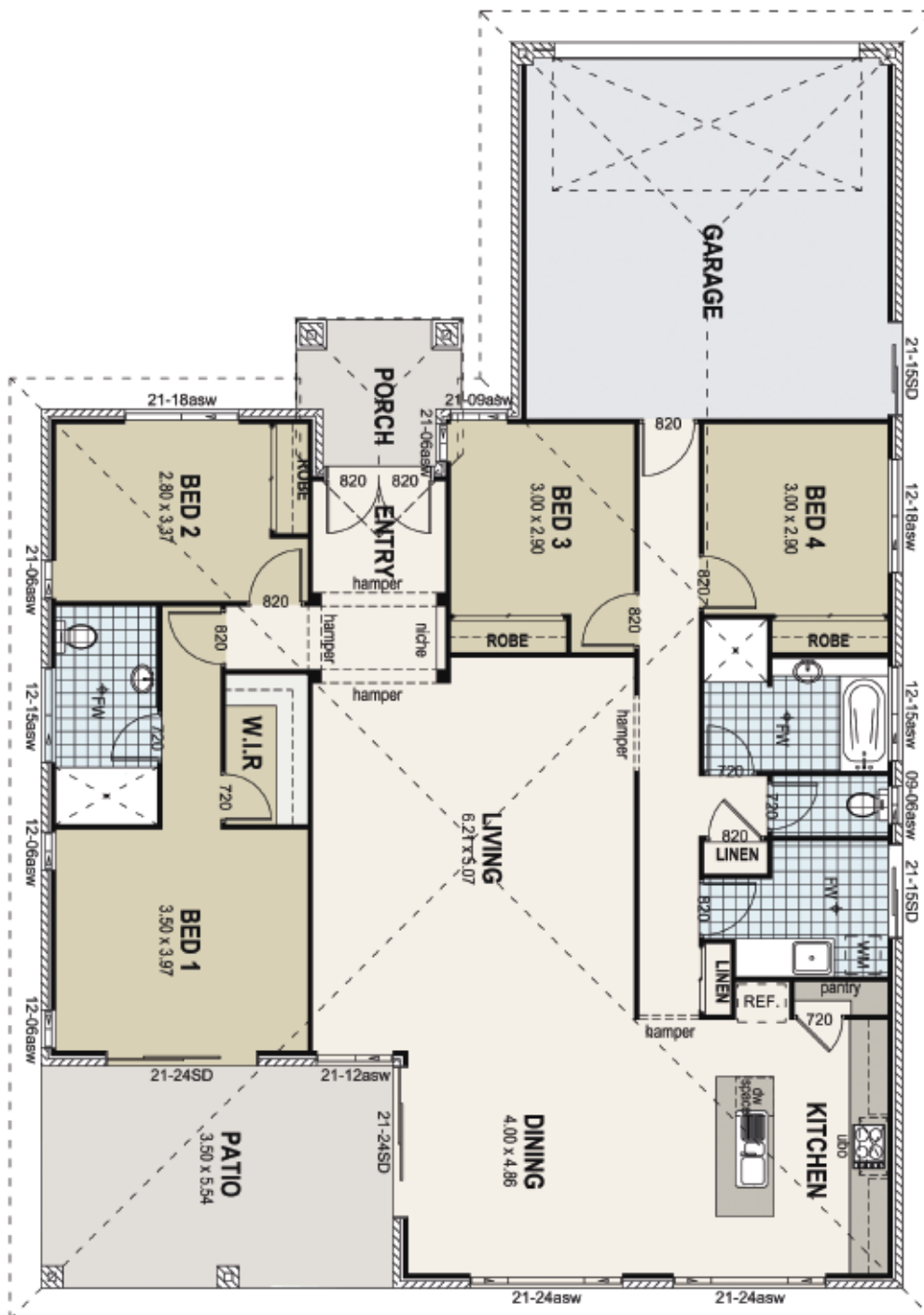
Pivotal Properties' list of quality inclusions guarantee that this home, on your land, will create the kind of retreat you will never want to leave.



Pivotal Properties • PO Box 137, Arundel DC 4214 • Tel: 1300 655 210
Fax: 1300 655 230 • www.pivotalproperties.com.au • info@pivotalproperties.com.au

© Copyright 2007 Pivotal Properties • All rights reserved, copying is strictly prohibited under copyright law

erik



TOTAL HOUSE AREA
226.88 sq.m (24.42 sqs)
HOUSE WIDTH - 14.54m
HOUSE LENGTH - 20.84m
(includes eaves)