

noosa

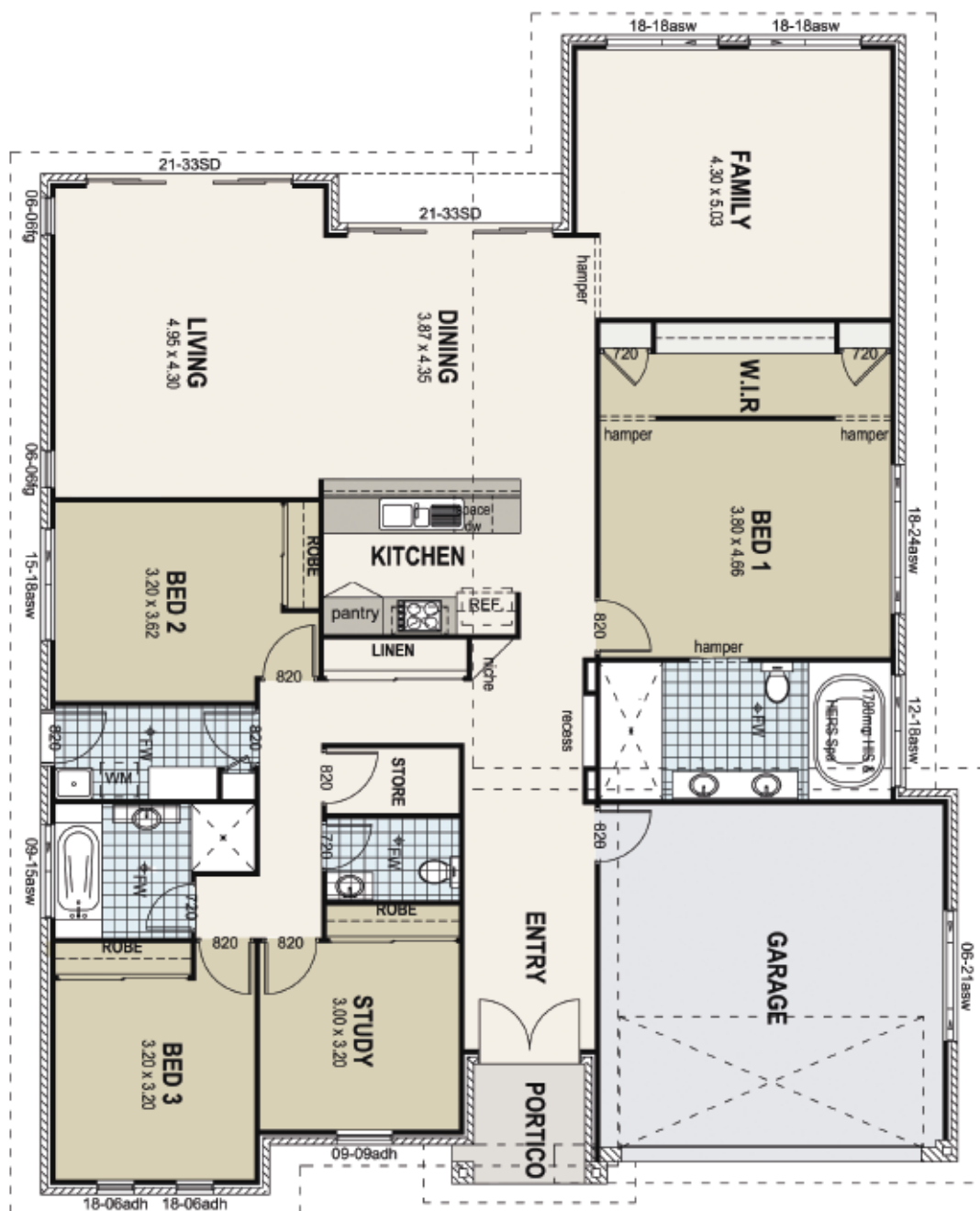


noosa

Noosa makes a feature out of a challenge. An architectural approach to the floorplan turns an average sloping block into a large and welcoming living space. Featuring three good sized bedrooms plus a study, Noosa presumes that while occupants wish to be within easy reach of the home's amenities, they also desire privacy and functionality. The kitchen is central to each area of the home and acts as a meeting place for family members to converge.

The expansive double garage and Noosa's particular focus on storage qualify it as a home where everything has a place. The casual divide between living areas ensures that each place within the home has an ambience all its own.

esoon



TOTAL HOUSE AREA
235.11 sq.m (25.30 sqs)
HOUSE WIDTH - 15.65m
HOUSE LENGTH - 19.24m
(includes eaves)